

# THE TREADWELL

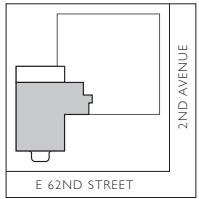
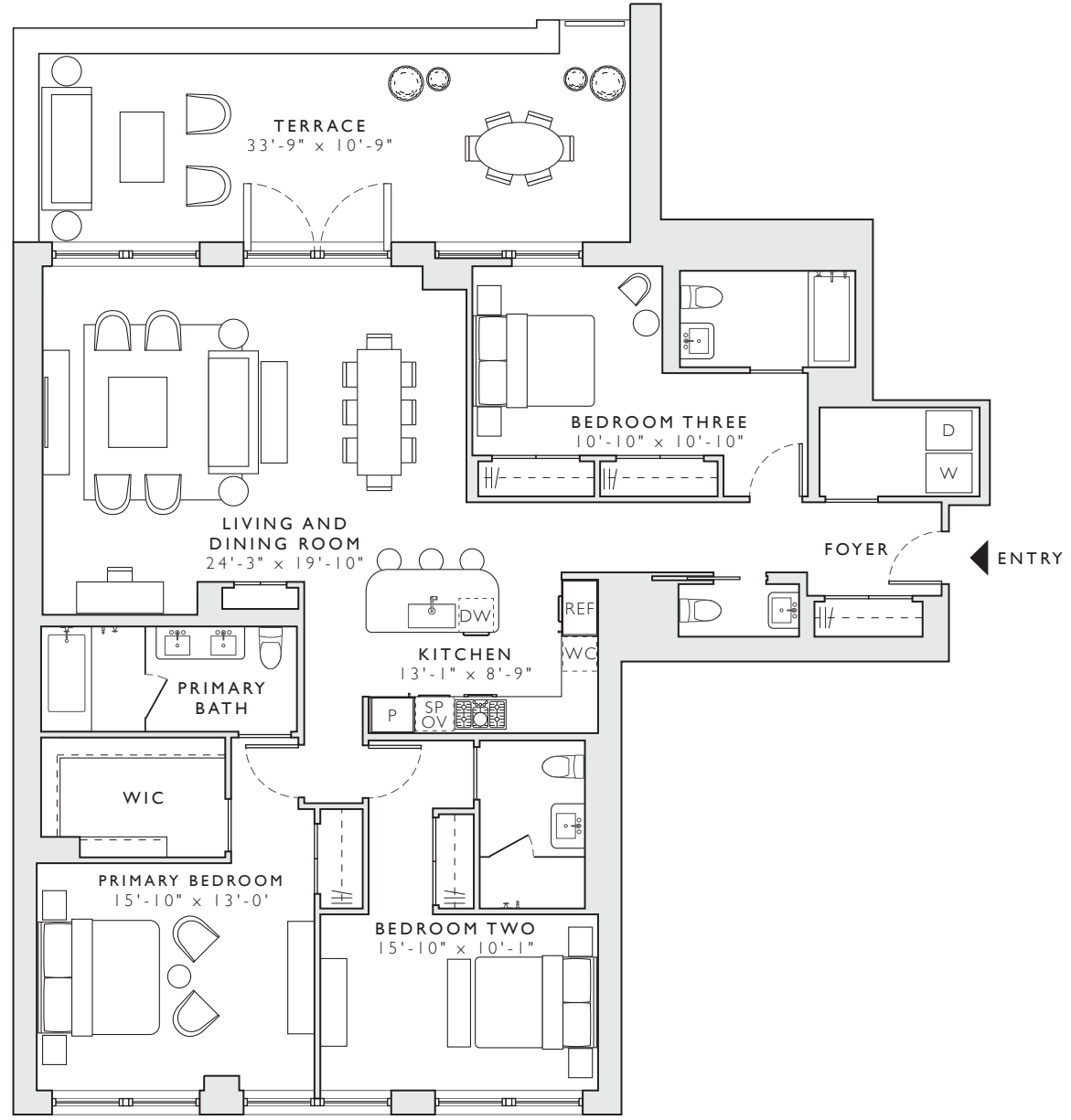
249 E 62

## THE FLATS RESIDENCE 2D

THREE BEDROOMS  
THREE BATHROOMS  
ONE POWDER ROOM

INTERIOR  
2,141 SF / 199 SM

EXTERIOR  
370 SF / 34 SM



Exclusive Sales & Marketing:  
Brown Harris Stevens  
Development Marketing

The unit layouts, square footage, and dimensions are approximate. Sponsor reserves the right to make changes in accordance with the offering plan. Furniture layouts shown are for concept only. THE COMPLETE OFFERING TERMS ARE IN AN OFFERING PLAN AVAILABLE FROM SPONSOR. FILE NO. CD22-0242. PROPERTY ADDRESS: 249 E 62ND ST. SPONSOR: 249 E 62ND ST LLC, 3811 TURTLE CREEK BOULEVARD, DALLAS, TEXAS 75219. EQUAL HOUSING OPPORTUNITY.