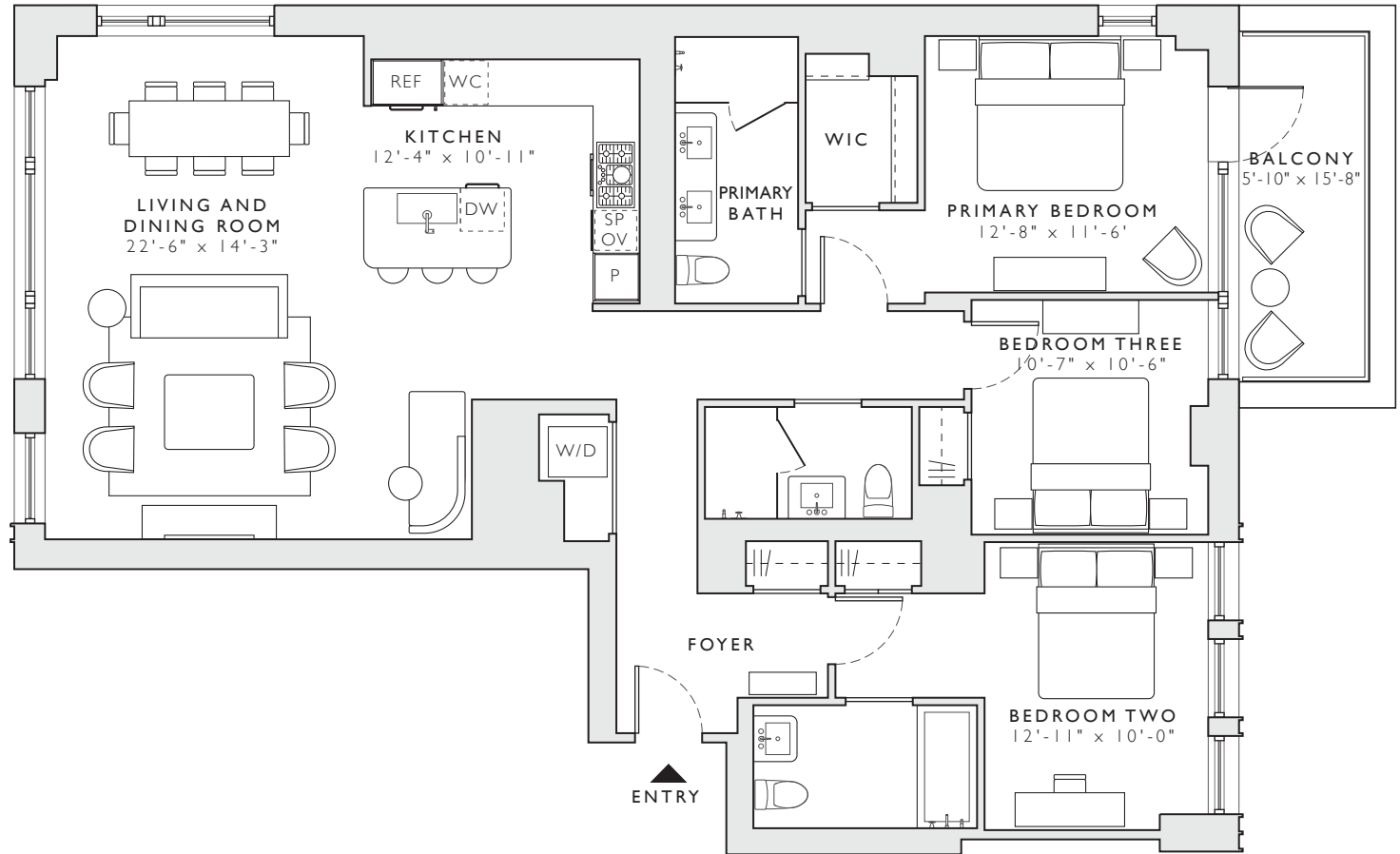


THE TREADWELL

249 E 62



RESIDENCE 25A

THREE BEDROOMS
THREE BATHROOMS

INTERIOR
1,681 SF / 156 SM

EXTERIOR
91 SF / 9 SM



Exclusive Sales & Marketing:
Brown Harris Stevens
Development Marketing

The unit layouts, square footage, and dimensions are approximate. Sponsor reserves the right to make changes in accordance with the offering plan. Furniture layouts shown are for concept only. THE COMPLETE OFFERING TERMS ARE IN AN OFFERING PLAN AVAILABLE FROM SPONSOR. FILE NO. CD22-0242. PROPERTY ADDRESS: 249 E 62ND ST. SPONSOR: 249 E 62ND ST LLC, 3811 TURTLE CREEK BOULEVARD, DALLAS, TEXAS 75219. EQUAL HOUSING OPPORTUNITY.