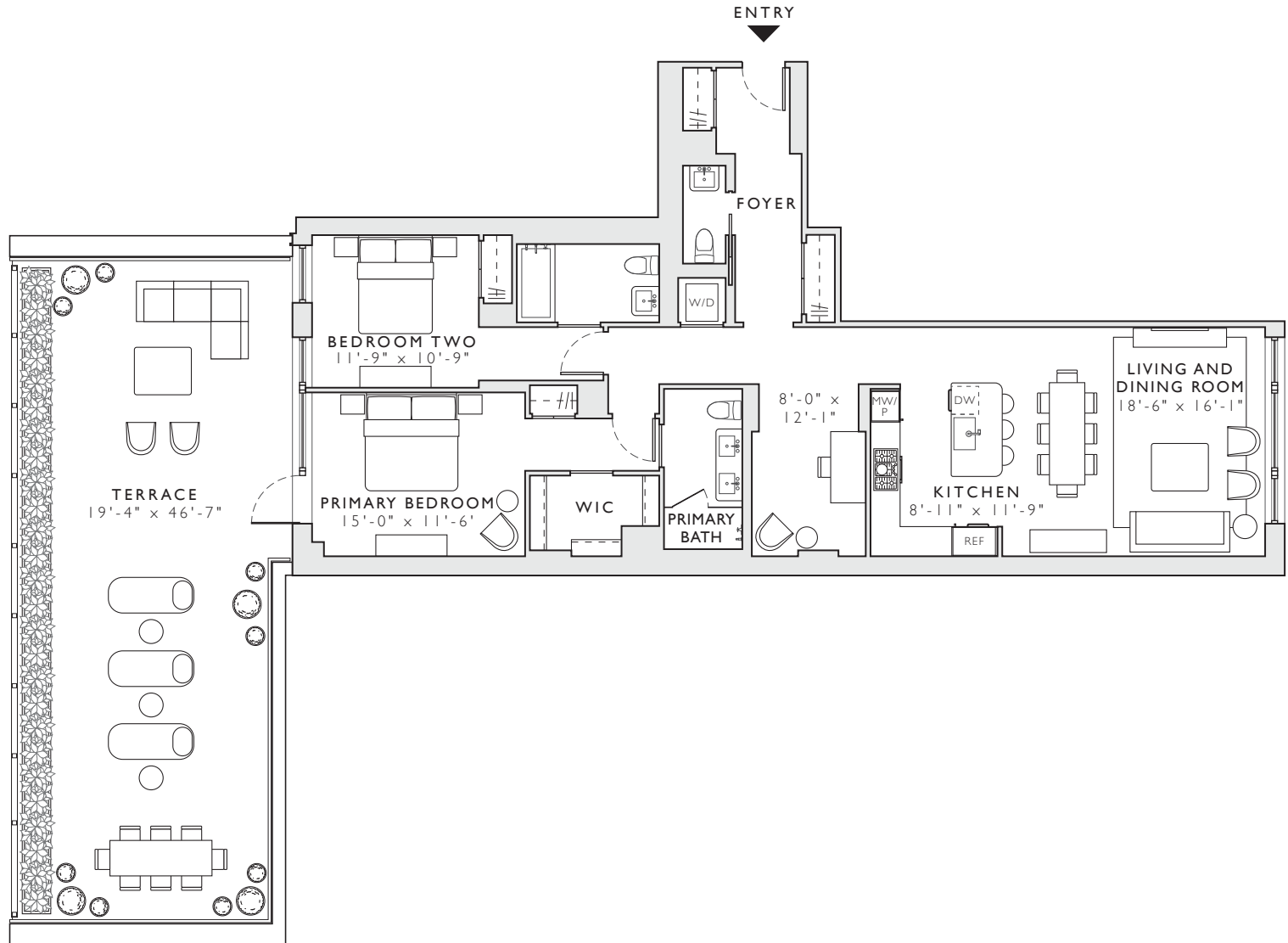


# THE TREADWELL

249 E 62

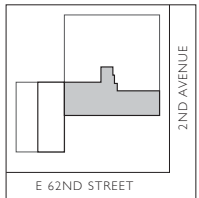


## RESIDENCE 6C

TWO BEDROOMS  
TWO BATHROOMS  
ONE POWDER ROOM

INTERIOR  
1,597 SF / 148 SM

EXTERIOR  
868 SF / 81 SM



Exclusive Sales & Marketing:  
Brown Harris Stevens  
Development Marketing

The unit layouts, square footage, and dimensions are approximate. Sponsor reserves the right to make changes in accordance with the offering plan. Furniture layouts shown are for concept only. THE COMPLETE OFFERING TERMS ARE IN AN OFFERING PLAN AVAILABLE FROM SPONSOR. FILE NO. CD22-0242. PROPERTY ADDRESS: 249 E 62ND ST. SPONSOR: 249 E 62ND ST LLC, 3811 TURTLE CREEK BOULEVARD, DALLAS, TEXAS 75219. EQUAL HOUSING OPPORTUNITY.